

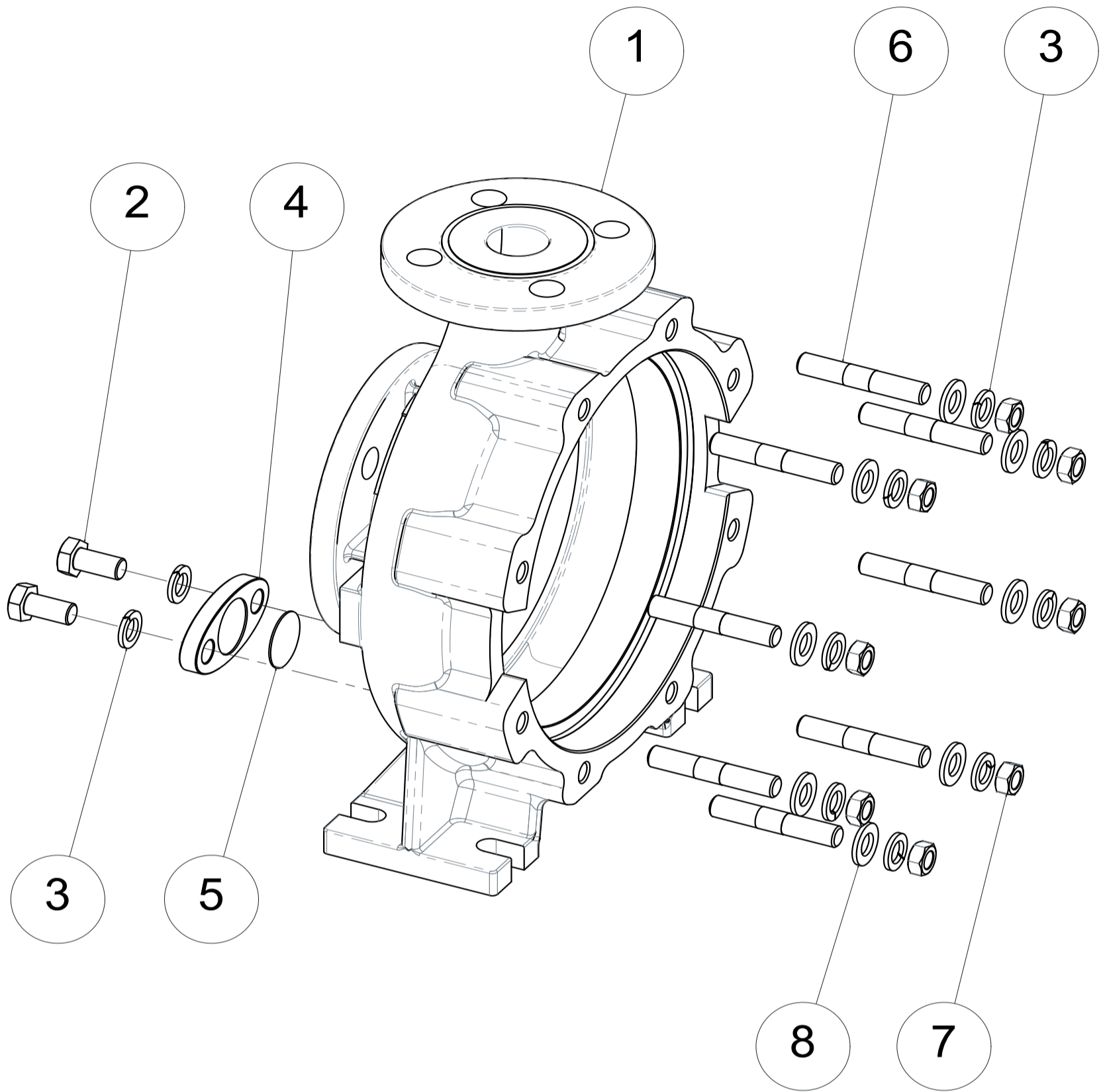


PUMP MODEL: CL MAG-M

ITEM: PUMP CASING ASSEMBLY EXPLODED VIEWS

CODE: /

E10998



EXPLODED VIEW

| N° | DESCRIPTION  |                     |                   | IDENTIFICATION |               |          |
|----|--------------|---------------------|-------------------|----------------|---------------|----------|
|    | COMPONENT    | MODEL               | FLANGE CONNECTION | COMPONENT CODE | MATERIAL      | QUANTITY |
| 1  | Pump Casing  | 50-32-160           | DIN 2633 - PN 16  | 56200C303BIWA  | CAST IRON/PFA | 1        |
|    |              | 50-32-200           | DIN 2633 - PN 16  | 56200C303CIWA  |               |          |
|    |              | 80-50-160           | DIN 2633 - PN 16  | 56200C305BIWA  |               |          |
|    |              | 80-50-200           | DIN 2633 - PN 16  | 56200C305CIWA  |               |          |
| 2  | Screw        | UNI EN 24017 M12x20 |                   | 91610TE1220A2  | A2-70         | 2        |
| 3  | Washer       | UNI1751 D.12        |                   | 91630S1221A2   | A2-70         | 10       |
| 4  | Drain Plug   | CL MAG-M            |                   | 53150C303BE    | AISI 304      | 1        |
| 5  | Drain Gasket | CL MAG-M            |                   | 91510P032      | PTFE          | 1        |
| 6  | Stud Bolt    | M12X72              |                   | 91610P1272Y    | AISI 420B     | 8        |
| 7  | Nut          | UNI 5588 M12        |                   | 91620N12A2     | A2-70         | 8        |
| 8  | Washer       | UNI 6592 D.12X24    |                   | 91630N1224A2   | A2-70         | 8        |